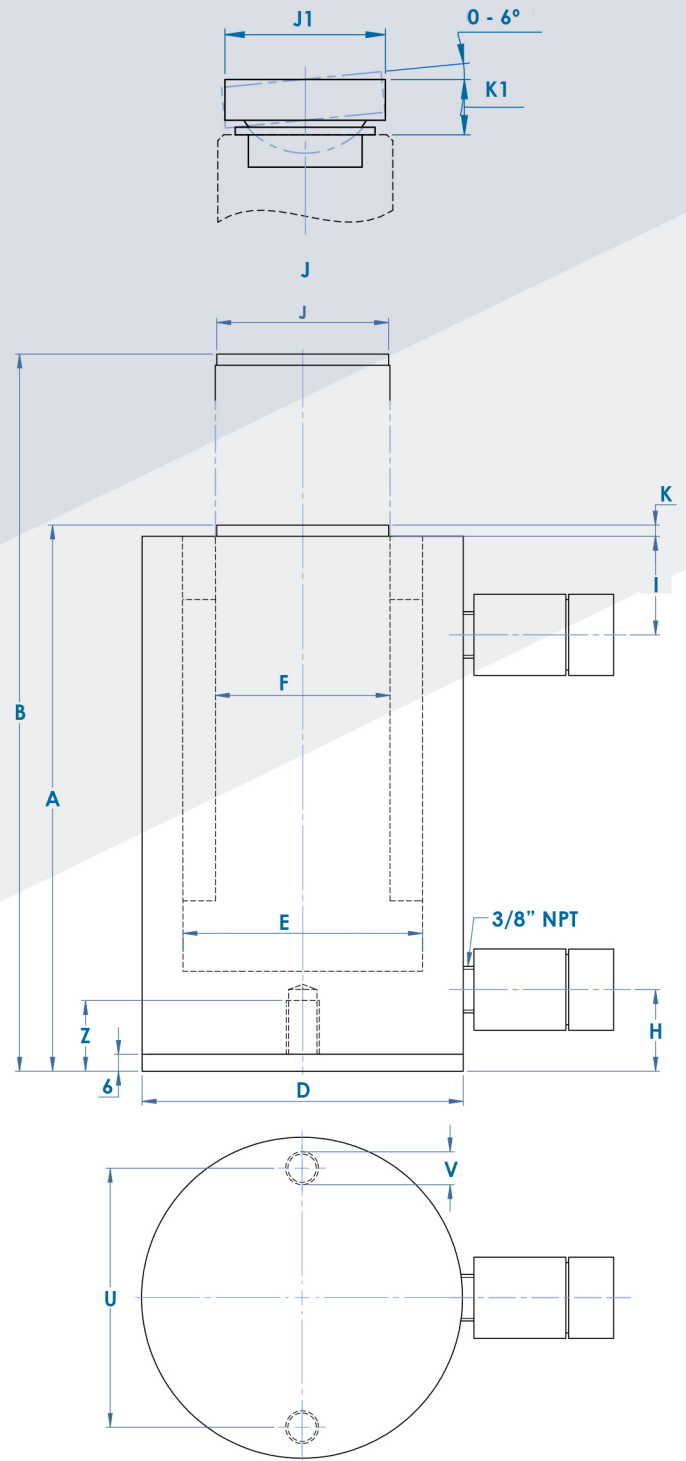


DOUBLE-ACTING

DA SERIES

40



ALUMINIUM CYLINDER DOUBLE-ACTING

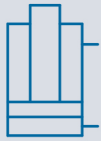
DA

- Double-acting light cylinders, quick and controlled retraction.
- Up to 40 % lighter than corresponding steel cylinders.



There are **tilt saddles** available for a safer use with non-centred loads and on uneven ground. See page 14.

EPD5A | EPD5AE electric pumps are recommended for **supplying power** to DA cylinders. See pages 52-53.



DOUBLE-ACTING

QUICK AND CONTROLLED
RETRACTION



Stroke
Up to 150 mm



Thrust and traction
30 to 100 Tn

DOUBLE-ACTING

DA

SERIES



Accessories: **Valves, distributors, fittings**, etc.
» Pages 56 –63.

- All aluminium parts have been treated so as to increase resistance, lengthen service life and prevent rust.
- Built-in safety valve to prevent overpressures.
- Composite metal bearings to withstand side loads and increase the service life of the cylinder.
- Handles included in most models.
- Base plate and steel saddle for protection against load-caused damage.

- Furnished with a removable and grooved steel saddle. Optional tilt saddles.
- High-flow female quick plug couplings with dust cover as standard in all models.
- Not recommended for applications with a large number of cycles.
- Longer strokes on demand.

41

Rated Force tn	REF.	Stroke mm.	Maximum Force kN	Usable Cross-Section cm ²	Dimensiones (mm)												Oil Capacity cm ³	Weight Kg.
					A	B	D	E	F	J	J1	H	I	K	K1	Z		
30,9	DA03005	50	309,3	44,2	171	221	100	75	60	39	55	24	43	5	23	21	221	4,8
	DA03010	100			221	321											442	5,6
	DA03015	150			271	421											663	6,5
49,6	DA05005	50	486,6	70,9	185	235	130	95	80	55	60	32	50	5	28	21	355	8,3
	DA05010	100			235	335											709	9,8
	DA05015	150			285	435											1.064	11,4
100,2	DA10005	50	982,6	143,1	225	275	180	135	110	93	98	40	61	5	35	21	716	18,4
	DA10010	100			275	375											1.431	21,2
	DA10015	150			325	475											2.147	24,1