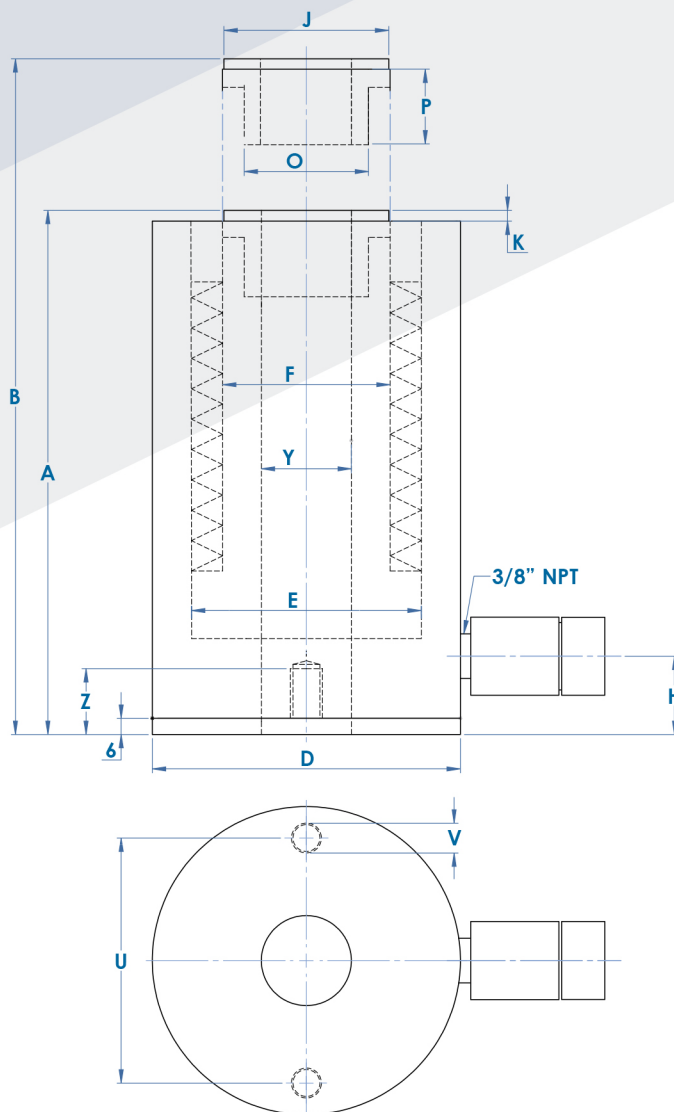


HOLLOW SINGLE-ACTING

RHA

SERIES

44



ALUMINIUM CYLINDERS

SPRING RETURN, SINGLE-ACTING

RHA

- Light, hollow-piston cylinders designed for traction and thrust jobs.
- Furnished with strong return springs that speed up retraction.

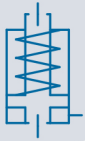


Threaded hollow saddles and grooved **solid saddles** available. See page 15.

BA manual pump series is recommended for supplying power to 30 and 60 Tn cylinders with up to 100 mm stroke lengths in the RHA series. See Page 51. For the rest, use an electric pump from the **EPS5A | EPS5AE** series. See pages 52-53.



ALUMINIUM CYLINDER



SINGLE-ACTING HOLLOW SPRING RETURN



Stroke
Up to 150 mm



Thrust
30 to 100 Tn

HOLLOW SINGLE-ACTING RHA SERIES



Accessories: **Valves, distributors, fittings, etc.**
» Pages 56 –63.

- Up to 40 % lighter than corresponding steel cylinders.
- All aluminium parts have been treated so as to increase resistance, lengthen service life and prevent rust.
- Composite metal bearings to withstand side loads and increase the service life of the cylinder.
- Equipped with a scraper in the piston to reduce the infiltration of dirt and to extend the cylinder service life.
- The top head prevents the piston extraction and withstands all the power of the cylinder.
- Handles included in most models.
- Base plate and steel saddle for protection against load-caused damage.
- Interchangeable steel saddles – flat, threaded or solid.
- High-flow female quick plug coupling with dust cover as standard in all models.
- Not recommended for applications with a large number of cycles.
- Longer strokes on demand.

45

Rated Force	REF.	Stroke	Maximum Force	Usable Cross-Section	Size (mm)														Oil Capacity	Weight
					A	B	D	E	F	H	J	K	O	P	U	V	Y	Z		
tn		mm.	kN	cm ²															cm ³	Kg.
33,7	RHA03005	50	330,4	48,1	208	258	129	90	68	35	55	5	M46x1,5	25	100	M6	33,6	26	241	7,6
	RHA03010	100			277	377													481	9,5
	RHA03015	150			349	499													722	11,6
59,1	RHA06005	50	579,7	84,4	244	294	175	125	95	42	79	5	M70x1,5	26	130	M6	54,0	26	422	16,7
	RHA06010	100			301	401													844	19,7
	RHA06015	150			369	519													1266	23,4
102,2	RHA10005	50	1002	146	261	311	235	170	130	45	116	5	M103x1,5	34	170	M6	79	26	730	32,5
	RHA10010	100			327	427													1460	39,0
	RHA10015	150			395	545													2190	46,8